



**HASANUDDIN  
UNIVERSITY**

# UNHAS LEADS SCHOLARSHIP

**COMMENCEMENT**

# 2026

# OBJECTIVES



To advance human resource development in developing countries



To foster greater cultural understanding among developing countries




To enhance relationships and partnership among developing countries

# Targeted Applicant

UNHAS LEADS SCHOLARSHIP is **a partial scholarship** which targets prospective students coming from developing countries

*\*see list of developing countries*





# Scholarship Coverage

**UNHAS LEADS Scholarship** covers full of development fee and deduction of international tuition fee

*find out more about fees & funding for foreign students and LEADS Scholarship*

# Study Program

BACHELOR  
PROGRAM



MASTER  
PROGRAM



DOCTORATE  
PROGRAM




# Scholarship Duration

Bachelor	<b>7 Semester</b>
Master	<b>3 Semester</b>
Doctor	<b>5 Semester</b>

# Eligibility Criteria

- Have no criminal record
- Fulfill all UNHAS requirements
- Have never been declared a Dropout at UNHAS at the same educational level





# Language Requirement

1. Applicant from English speaking countries is not required to submit certificate of English proficiency test.
2. Applicant who graduated (in the last 2 years) from school/university in English speaking countries is not required to submit certificate of English proficiency test.
3. Applicant who graduated (in the last 2 years) from school/university in English speaking countries is not required to submit certificate of English proficiency test.

# Study Program

Applicant can choose only  
1 (one) study program

## Selection Test

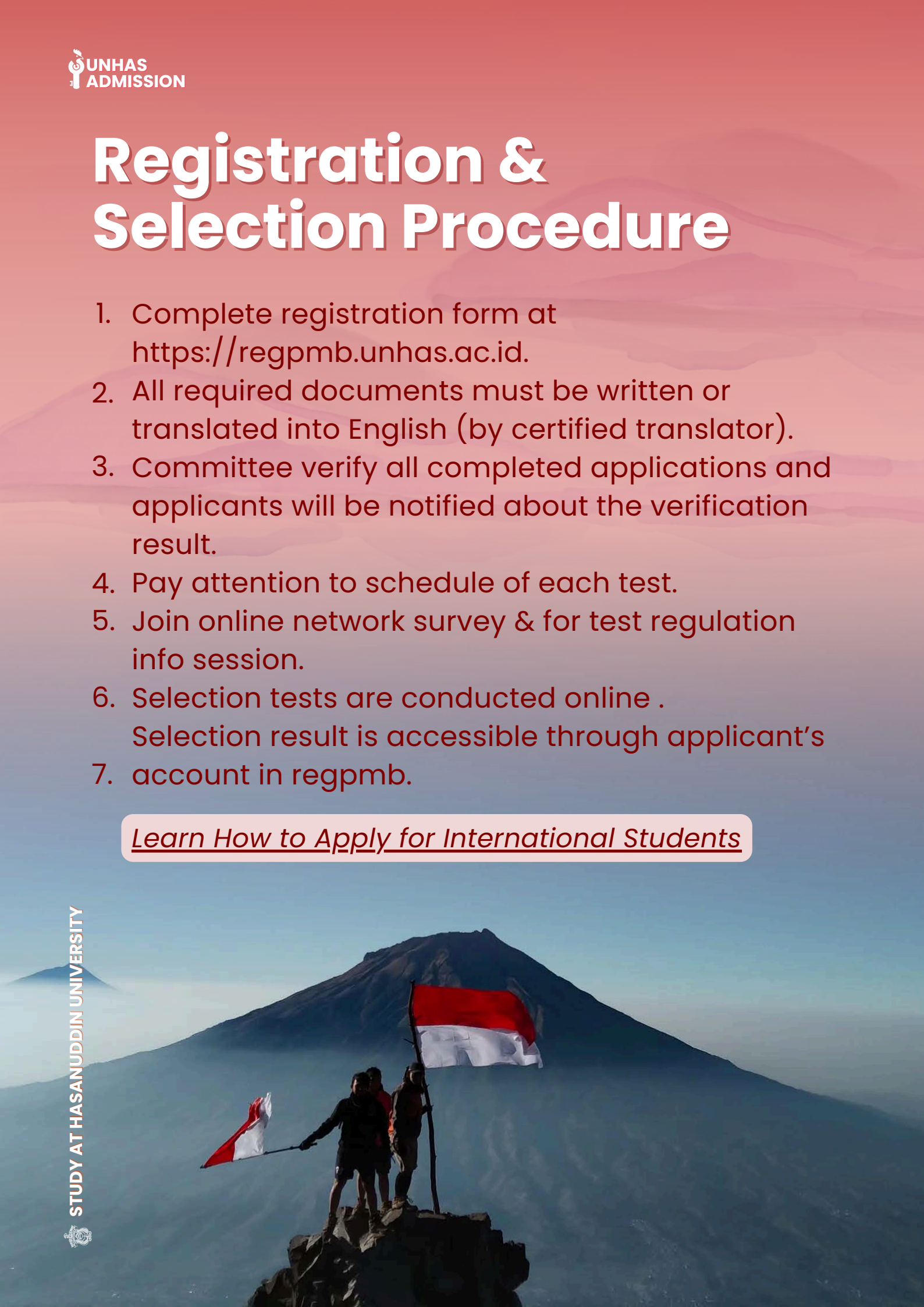
1. Academic Potential
2. Psychometrics Test
3. Interview
4. English Proficiency Test



# Registration & Selection Procedure

1. Complete registration form at <https://regpmb.unhas.ac.id>.
2. All required documents must be written or translated into English (by certified translator).
3. Committee verify all completed applications and applicants will be notified about the verification result.
4. Pay attention to schedule of each test.
5. Join online network survey & for test regulation info session.
6. Selection tests are conducted online .  
Selection result is accessible through applicant's
7. account in regpmb.

[Learn How to Apply for International Students](#)



## Requirement

- Hold a high school degree (provide scanned degree certificate, academic transcript. Also, provide the copy of English of Indonesian translation by certified translator)
- Maximum 21 years old per 1 September when applying
- Provide Motivation Letter that explains why you're worth LEADS Scholarship, your previous education/work, your contribution after finish your study, and future plan (written in English)
- Provide the English Proficiency Test Score minimum as follows: IBT TOEFL 35 or IELTS 5,0 or ITP TOEFL 450, (except Faculty of Medicine must be minimum IELTS 6.0 or IBT TOEFL 60 or ITP TOEFL 600) or BIPA Certificate minimum score 450
- Provide Curriculum Viate (written in English)
- Provide recent coloured photograph (size 4x cm)
- Provide Health Certificate (psychological and physical health examination) from a Government Doctor in the home country and Thorax chest X-ray results
- Provide letter of Recommendation from the Indonesian Embassy or the Indonesian Consulate General
- Provide proof of Citizenship (Identity Card or Passport)
- Provide Letter of Academic Recommendation from previous school

# Study Program

## Faculty of Engineering

1. Civil Engineering
2. Mechanical Engineering
3. Naval Architecture
4. Electrical Engineering
5. Architecture
6. Geology
7. Industrial Engineering
8. Ocean Engineering
9. Marine Engineering
10. Urban and Regional Planning
11. Mining Engineering
12. Informatics
13. Environmental Engineering
14. Metallurgical & Materials Engineering
15. Geodetic Engineering

## Faculty of Marine & Fisheries

1. Marine Science
2. Aquatic Resources Management
3. Aquaculture
4. Fisheries Agribusiness
5. Capture Fisheries
6. Fish Product Technology

## Faculty of Dentistry

- Dental Science

## Faculty of Agriculture

1. Faculty of Agriculture
2. Agrotechnology
3. Agribusiness
4. Soil Science
5. Plant Protection
6. Plant Breeding and Biotechnology
7. Agricultural Development

## Faculty of Agricultural Technology

- Agricultural Engineering
- Food Science & Technology
- Agricultural Industrial Technology

## Faculty of Public Health

1. Public Health
2. Nutrition Science

## Faculty of Forestry

1. Forestry
2. Forestry Engineering
3. Forestry Conservation

## Faculty of Nursing

1. Nursing
2. Physiotherapy

# Study Program

## Faculty of Economics & Business

1. Development Economics
2. Management
3. Accounting
4. Islamic Economics & Business

## Faculty of Animal Husbandry

1. Animal Husbandry

## Faculty of Pharmacy

1. Pharmacy

## Faculty of Medicine

1. Medicine
2. Psychology
3. Veterinary Medicine

## Faculty of Mathematics & Natural Science

1. Mathematics
2. Physics
3. Chemistry
4. Biology
5. Statistics
6. Geophysics
7. Information System
8. Actuarial Science

## Faculty of Social & Political Sciences

1. Communication
2. Sociology
3. Political Science
4. Government Studies
5. International Relations
6. Anthropology
7. Public Administration
8. Library & Information Science

## Faculty of Cultural Sciences

1. Indonesian Literature
2. Local Literature
3. Arabic Literature
4. English Literature
5. French Literature
6. History
7. Archaeology
8. Japanese Literature
9. Chinese Language & Culture
10. Tourism

## Faculty of Law

1. Law
2. State Administrative Law



# Requirement (1)

1. Hold bachelor degree (provide scanned degree certificate, academic transcript. Also, provide the copy of English of Indonesian translation by certified translator)
2. Provide Motivation Letter that explains why you're worth LEADS Scholarship, your previous education/work, your contribution after finish your study, and future plan (written in English)
3. Provide a copy of English or Indonesian language proficiency certificate. Indonesian Languages certificate for Foreigners (min. score 450) or English language certificate IBT TOEFL 35 or IELTS 5,0 or TOEFL ITP 450 (the certificate must be obtained within the last 2 years)
4. Provide Curriculum Vitae (written in English)
5. Provide recent coloured photograph (size 4x6 cm)
6. Provide proof of Citizenship (Identity Card or Passport)



## Requirement (2)

7. Provide Health Certificate (psychological and physical health examination) from a Government Doctor in the home country and Thorax chest X-ray results
8. Provide letter of Recommendation from the Indonesian Embassy or the Indonesian Consulate General
9. Provide Letter of Recommendation from supervisor or employer to apply for Master Degree (if working). If not working, provide letter of statement)
10. Provide Letter of Academic Recommendation from previous university
11. Provide a thesis research plan, not exceeding 10 pages, A4 size, in Times New Roman, font size 12, with 1.5-point spacing. The plan should include an introduction, problem statement, research methods, and anticipated results

# Study Program

## Faculty of Economic & Business

1. Management
2. Management Science
3. Development & Planning Economics
4. Local Finance
5. Resource Economics
6. Accounting
7. Microfinance

## Faculty of Law

1. Law
2. Notary Law

## Faculty of Medicine

1. Health & Medical Education

## Faculty of Pharmacy

1. Pharmacy

## Faculty of Nursing

1. Nursing

## Faculty of Dentistry

1. Dental Science

## Faculty of Forestry

1. Forestry

## Faculty of Social & Political Sciences

1. Public Administration
2. Communication
3. Sociology
4. Anthropology
5. Political Sciences
6. Government Studies
7. International Relations

## Faculty of Cultural Sciences

1. Linguistics
2. English Language
3. Indonesian Language
4. Archaeology
5. History
6. Cultural Sciences

## Faculty of Agriculture

1. Agrotechnology
2. Plant Pest & Disease
3. Food Science & Technology
4. Agricultural Engineering
5. Agro-industrial Engineering

## Faculty of Animal Husbandry

1. Animal Science & Technology

# Study Program

## Faculty of Public Health

1. Public Health
2. Hospital Administration
3. Occupational Health & Safety
4. Nutrition Science
5. Health Administration & Policy
6. Environmental Health

## School of Postgraduate

1. Agricultural Systems
2. Regional Planning & Development
3. Environmental Management
4. Agribusiness
5. Urban Management
6. Biomedical Science
7. Gender & Development
8. Infrastructure Planning Engineering
9. Transportation
10. Midwifery
11. Integrated Coastal Resource Management
12. Disaster Management
13. Biomedical Engineering
14. Criminology
15. Educational Management

## Faculty of Engineering

1. Civil Engineering
2. Mechanical Engineering
3. Electrical Engineering
4. Architecture
5. Naval Architecture
6. Geology
7. Industrial Engineering
8. Informatics
9. Environmental Engineering
10. Urban & Regional Planning
11. Mining Engineering
12. Ocean Engineering

## Faculty of Mathematics & Natural Sciences

1. Chemistry
2. Mathematics
3. Physics
4. Geophysics
5. Biology
6. Statistics
7. Data Science

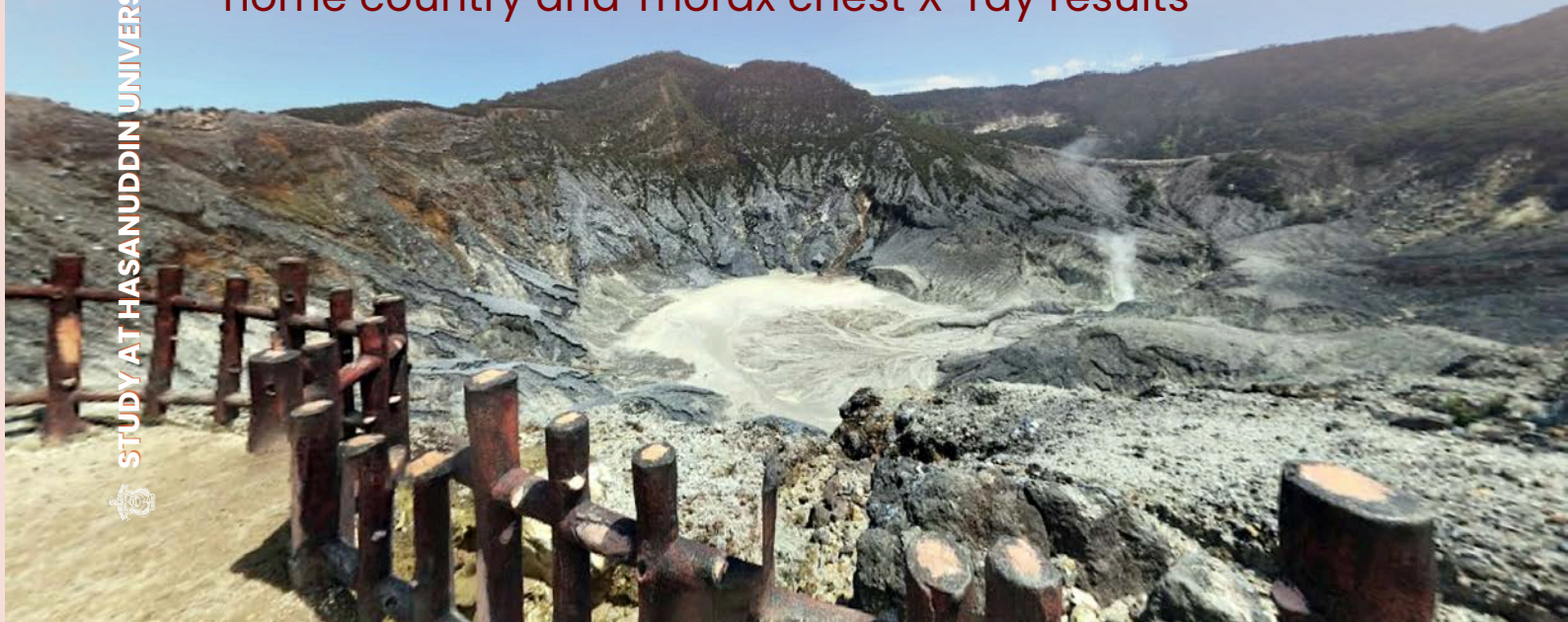
## Faculty of Marine & Fisheries

1. Fisheries Science
2. Marine Science



## Requirement (1)

1. Hold master degree (provide scanned degree certificate, academic transcript. Also, provide the copy of English of Indonesian translation by certified translator)
2. Provide Motivation Letter that explains why you're worth LEADS Scholarship, your previous education/work, your contribution after finish your study (written in English)
3. A copy of English or Indonesian language proficiency certificate. Indonesian Languages certificate for Foreigners (min. score 450) or English language certificate IBT TOEFL 60 or IELTS 6.0 (writing band min.6.0) of TOEFL ITP 500 (the certificate must be obtained within the last 2 years)
4. Provide Curriculum Vitae (written in English)
5. Provide recent coloured photograph (size 4x6 cm)
6. Provide proof of Citizenship (Identity Card or Passport)
7. Provide Health Certificate (psychological and physical health examination) from a Government Doctor in the home country and Thorax chest X-ray results



## Requirement (2)

8. Provide letter of Recommendation from potential supervisor in Hasanuddin University
9. Provide letter of Recommendation from the Indonesian Embassy or the Indonesian Consulate General
10. Provide Letter of Recommendation from supervisor or employer to apply for Master Degree (if working). If not working, provide letter of statement)
11. Provide Letter of Academic Recommendation from previous university
12. Provide Statement of Purpose explaining study purpose, the origin of interest in continuing their study in Indonesia and Hasanuddin University, interest in continuing the research plan, and future plan
13. Provide a dissertation research plan not exceeding 10 pages, A4 size, in Times New Roman, font size 12, with 1.5-point spacing. The plan should include an introduction, problem statement, research methods, and anticipated results
14. Provide list of publication within the last 3years



# Study Program

## Faculty of Economics & Business

1. Economics
2. Accounting Science
3. Management

## Faculty of Law

1. Law

## Faculty of Medicine

1. Medical Science

## Faculty of Engineering

1. Civil Engineering
2. Architecture
3. Earth & Environmental Science
4. Mechanical Engineering
5. Electrical Engineering
6. Informatics

## Faculty of Social & Political Sciences

1. Public Administration
2. Anthropology
3. Communication
4. Sociology
5. Political Science

## Faculty of Dentistry

1. Dental Science

## Faculty of Mathematics & Natural Sciences

1. Chemistry
2. Mathematics
3. Physics

## Faculty of Animal Husbandry

1. Animal Science

## Faculty of Public Health

1. Public Health

## Faculty of Marine & Fisheries Sciences

1. Fisheries Science

## Faculty of Forestry

1. Forestry Science

## Faculty of Pharmacy

1. Pharmacy

## School of Postgraduate

1. Agricultural Science
2. Development Studies
3. Environmental Science

## Faculty of Cultural Sciences

1. Linguistics
2. English Language
3. Indonesian Literature

# UNHAS has campuses spread across 7 locations in South Sulawesi and 1 in Jakarta

## MAP OF INDONESIA



Unhas main campus is  
located in Tamalanrea,  
Makassar



# Map of Unhas Tamalanrea Campus

# List of Countries for UNHAS LEADS Scholarship

## A. European Continent

- Albania
- Belarus
- Bulgaria
- Georgia
- Hungaria
- Kosovo
- Kroasia
- Makedonia
- Moldova
- Montenegro
- Polandia
- Romania
- Rusia
- Serbia
- Turki
- Ukraina
- Bosnia
- Herzegovina



# List of Countries for UNHAS LEADS Scholarship

## B. American Continent

- Jamaica
- Argentina
- Kolombia
- Bahamas
- Honduras
- Venezuela
- Sinty Maarten
- Guatamela
- Suriname
- Guyana
- Panama
- Brasil
- Paraguay
- Republik Dominika
- Antigua dan Barbuda
- Trinidad dan Tobago
- Dominika Saint Kitts and Nevis
- Saint Luca El Salvador
- Saint Vincent and Grenadine
- Kosta Rika
- Barbados
- Meksiko
- Belize
- Nikaragua
- Bolivia
- Chile
- Peru
- Curacao
- Haiti
- Uruguay
- Honduras
- Venezuela

# List of Countries for UNHAS LEADS Scholarship

## C. Asian Continent

- Afghanistan
- Maladewa
- Arab Saudi
- Malaysia
- Armenia
- Micronesia
- Azerbaijan
- Mongolia
- Bahrain
- Myanmar
- Bangladesh
- Nepal
- Bhutan
- Oman
- Brunei Darussalam
- Uni Emirat Arab (UEA)
- Kuwait
- Vietnam
- Laos
- Yaman
- Kiribati
- Papua New Guenia
- Filipina
- Kazakhstan
- Turkmenistan
- Qatar
- India
- Sri Lanka
- Indonesia
- Suriah
- Irak
- Tajikistan
- Iran
- Thailand
- Kamboja
- Timor Leste
- Kirgiztan
- Pakistan
- Lebanon
- Yordania
- China
- Uzbekistan

# List of Countries for UNHAS LEADS Scholarship

## D. Australia & Oceania Continent

- Federasi Mikronesia

## E. African Continent

- Afrika Selatan
- Madagaskar
- Republik Afrika Tengah
- Republik Demokratik Kongo
- Sao Tome & Principe
- Malawi
- Algeria
- Equatorial Guinea
- Pantai Gading
- Republik Kongo
- Mali
- Angola
- Mauritania
- Botswana
- Mauritius
- Burkina Faso
- Sudan Selatan
- Mozambik
- Cape Verde
- Namibia
- Chad
- Niger
- Djibouti
- Nigeria
- Eritrea
- Eswantini
- Etiopia
- Mesir
- Burundi
- Maroko
- Benin
- Rwanda
- Gabon
- Libya
- Gambia
- Senegal
- Ghana
- Seychelles
- Sierra Leone
- Guinea-Bissau
- Sudan
- Kamerun
- Kenya
- Tanzania
- Komoro
- Togo
- Lesotho
- Tunisia
- Liberia
- Zambia
- Zimbabwe



# EDUCATIONAL FEES COMPARISONS

## BACHELOR DEGREE

No.	Study Program	Regular Class		Leads Scholarship
		Tuition Fee	Educational Fee	Tuition Fee
1	Development Economics	17.850.000	40.650.000	8.000.000
2	Management	17.850.000	40.650.000	8.000.000
3	Accounting	17.850.000	40.650.000	8.000.000
4	Islamic Economics and Business	17.850.000	40.650.000	5.000.000
5	Law	17.850.000	40.650.000	8.000.000
6	State Administrative Law	17.850.000	40.650.000	7.000.000
7	Medicine	17.850.000	40.650.000	25.000.000
8	Psychology	17.850.000	40.650.000	9.000.000
9	Veterinary Medicine	17.850.000	40.650.000	10.500.000
10	Civil Engineering	17.850.000	40.650.000	7.750.000
11	Mechanical Engineering	17.850.000	40.650.000	7.750.000
12	Naval Architecture	17.850.000	40.650.000	7.750.000
13	Electrical Engineering	17.850.000	40.650.000	7.750.000
14	Architecture	17.850.000	40.650.000	7.750.000
15	Geology	17.850.000	40.650.000	7.750.000
16	Industrial Engineering	17.850.000	40.650.000	7.750.000
17	Ocean Engineering	17.850.000	40.650.000	7.750.000
18	Marine Engineering	17.850.000	40.650.000	7.750.000
19	Urban and Regional Planning	17.850.000	40.650.000	7.750.000
20	Mining Engineering	17.850.000	40.650.000	7.750.000
21	Informatics	17.850.000	40.650.000	7.750.000
22	Environmental Engineering	17.850.000	40.650.000	7.750.000
23	Metallurgical & Materials Engineering	17.850.000	40.650.000	7.750.000
24	Geodetic Engineering	17.850.000	40.650.000	7.750.000
25	Public Administration	17.850.000	40.650.000	7.000.000
26	Communication	17.850.000	40.650.000	7.000.000
27	Sociology	17.850.000	40.650.000	7.000.000
28	Political Science	17.850.000	40.650.000	7.000.000
29	Government Studies	17.850.000	40.650.000	7.000.000
30	International Relations	17.850.000	40.650.000	7.000.000
31	Anthropology	17.850.000	40.650.000	7.000.000
32	Indonesian Literature	17.850.000	40.650.000	4.500.000
33	Local Literature	17.850.000	40.650.000	4.000.000
34	Arabic Literature	17.850.000	40.650.000	4.000.000
35	English Literature	17.850.000	40.650.000	5.000.000

# EDUCATIONAL FEES COMPARISONS BACHELOR DEGREE

No.	Study Program	Regular Class		Leads Scholarship
		Tuition Fee	Educational Fee	Tuition Fee
36	French Literature	17.850.000	40.650.000	4.000.000
37	History	17.850.000	40.650.000	4.000.000
38	Archaeology	17.850.000	40.650.000	4.000.000
39	Japanese Literature	17.850.000	40.650.000	4.500.000
40	Chinese Language & Culture	17.850.000	40.650.000	4.500.000
41	Tourism	17.850.000	40.650.000	4.500.000
42	Agrotechnology	17.850.000	40.650.000	6.000.000
43	Agribusiness	17.850.000	40.650.000	6.000.000
44	Food Science & Technology	17.850.000	40.650.000	6.000.000
45	Agricultural Engineering	17.850.000	40.650.000	6.000.000
46	Soil Science	17.850.000	40.650.000	6.000.000
47	Plant Protection	17.850.000	40.650.000	6.000.000
48	Agroindustrial Technology	17.850.000	40.650.000	6.000.000
49	Agricultural Development	17.850.000	40.650.000	6.000.000
50	Mathematics	17.850.000	40.650.000	7.750.000
51	Physics	17.850.000	40.650.000	7.750.000
52	Chemistry	17.850.000	40.650.000	7.750.000
53	Biology	17.850.000	40.650.000	7.750.000
54	Statistics	17.850.000	40.650.000	7.750.000
55	Geophysics	17.850.000	40.650.000	7.750.000
56	Information System	17.850.000	40.650.000	7.750.000
57	Actuarial Science	17.850.000	40.650.000	8.000.000
58	Animal Husbandry	17.850.000	40.650.000	7.000.000
59	Dental Science	17.850.000	40.650.000	15.000.000
60	Public Health	17.850.000	40.650.000	7.750.000
61	Nutrition Science	17.850.000	40.650.000	7.750.000
62	Marine Science	17.850.000	40.650.000	8.000.000
63	Aquatic Resources Management	17.850.000	40.650.000	8.000.000
64	Aquaculture	17.850.000	40.650.000	8.000.000
65	Fisheries Agribusiness	17.850.000	40.650.000	8.000.000
66	Capture Fisheries	17.850.000	40.650.000	8.000.000
67	Fish Product Technology	17.850.000	40.650.000	8.000.000
68	Forestry	17.850.000	40.650.000	6.000.000
69	Forestry Engineering	17.850.000	40.650.000	6.000.000
70	Forestry Conservation	17.850.000	40.650.000	6.000.000
71	Pharmacy	17.850.000	40.650.000	15.000.000
72	Nursing	17.850.000	40.650.000	8.750.000
73	Physiotherapy	17.850.000	40.650.000	8.750.000

# EDUCATIONAL FEES COMPARISONS MASTER DEGREE

No.	Study Program	Regular Class		Leads Scholarship
		Tuition Fee	Development Fee	Tuition Fee
1	Management	22.750.000	45.500.000	10.000.000
2	Management Science	22.750.000	45.500.000	7.500.000
3	Development & Planning Economics	22.750.000	45.500.000	7.500.000
4	Local Finance	22.750.000	45.500.000	7.500.000
5	Resource Economics	22.750.000	45.500.000	7.500.000
6	Accounting	22.750.000	45.500.000	10.000.000
7	Microfinance	22.750.000	45.500.000	7.500.000
8	Law	22.750.000	45.500.000	9.000.000
9	Notary Law	22.750.000	45.500.000	11.500.000
10	Health & Medical Education	24.350.000	45.500.000	10.000.000
11	Civil Engineering	24.350.000	45.500.000	9.000.000
12	Mechanical Engineering	24.350.000	45.500.000	9.000.000
13	Electrical Engineering	24.350.000	45.500.000	9.000.000
14	Architecture	24.350.000	45.500.000	9.000.000
15	Naval Architecture	24.350.000	45.500.000	9.000.000
16	Geology	24.350.000	45.500.000	9.000.000
17	Industrial Engineering	24.350.000	45.500.000	9.000.000
18	Informatics	24.350.000	45.500.000	9.000.000
19	Environmental Engineering	24.350.000	45.500.000	9.000.000
20	Urban & Regional Planning	24.350.000	45.500.000	9.000.000
21	Mining Engineering	24.350.000	45.500.000	9.000.000
22	Public Administration	22.750.000	45.500.000	9.000.000
23	Communication	22.750.000	45.500.000	7.500.000
24	Sociology	22.750.000	45.500.000	7.500.000
25	Anthropology	22.750.000	45.248.000	7.500.000
26	Political Sciences	22.750.000	45.500.000	7.500.000
27	Government Studies	22.750.000	45.500.000	9.000.000
28	Linguistics	22.750.000	45.500.000	9.000.000
29	English Language	22.750.000	45.500.000	9.000.000
30	Indonesian Language	22.750.000	45.500.000	7.500.000
31	Archaeology	22.750.000	45.500.000	7.500.000
32	History	22.750.000	45.500.000	7.500.000
33	Cultural Sciences	22.750.000	45.500.000	7.500.000
34	Agrotechnology	24.350.000	45.500.000	7.500.000
35	Plant Pest & Disease	24.350.000	45.500.000	7.500.000

# EDUCATIONAL FEES COMPARISONS

## MASTER DEGREE

No.	Study Program	Regular Class		Lead Scholarship
		Tuition Fee	Development Fee	Tuition Fee
36	Food Science & Technology	24.350.000	45.500.000	7.500.000
37	Agricultural Engineering	24.350.000	45.500.000	7.500.000
38	Agro-industrial Engineering	24.350.000	45.500.000	7.500.000
39	Chemistry	24.350.000	45.500.000	7.500.000
40	Mathematics	24.350.000	45.500.000	7.500.000
41	Physics	24.350.000	45.500.000	7.500.000
42	Geophysics	24.350.000	45.500.000	7.500.000
43	Biology	24.350.000	45.500.000	7.500.000
44	Statistics	24.350.000	45.500.000	7.500.000
45	Animal Science & Technology	24.350.000	45.500.000	7.500.000
46	Dental Science	24.350.000	45.500.000	10.000.000
47	Public Health	24.350.000	45.500.000	9.000.000
48	Hospital Administration	24.350.000	45.500.000	9.000.000
49	Occupational Health & Safety	24.350.000	45.500.000	9.000.000
50	Nutrition Science	24.350.000	45.500.000	9.000.000
51	Health Administration & Policy	24.350.000	45.500.000	9.000.000
52	Environmental Health	24.350.000	45.500.000	9.000.000
53	Fisheries Science	24.350.000	45.500.000	7.500.000
54	Marine Science	24.350.000	45.500.000	7.500.000
55	Forestry	24.350.000	45.500.000	7.500.000
56	Pharmacy	24.350.000	45.500.000	10.000.000
57	Nursing	24.350.000	45.500.000	10.000.000
58	Agricultural Systems	24.350.000	45.500.000	7.500.000
59	Regional Planning & Development	24.350.000	45.500.000	9.000.000
60	Environmental Management	24.350.000	45.500.000	7.500.000
61	Agribusiness	24.350.000	45.500.000	7.500.000
62	Urban Management	24.350.000	45.500.000	7.500.000
63	Biomedical Science	24.350.000	45.500.000	9.000.000
64	Gender & Development	24.350.000	45.500.000	7.500.000
65	Infrastructure Planning Engineering	24.350.000	45.500.000	9.000.000
66	Transportation	24.350.000	45.500.000	9.000.000
67	Midwifery	24.350.000	45.500.000	10.000.000
68	Integrated Coastal Resource Management	24.350.000	45.248.000	7.500.000
69	Disaster Management	24.350.000	45.248.000	7.500.000
70	Biomedical Engineering	24.350.000	45.248.000	9.000.000
71	Criminology	24.350.000	45.248.000	9.000.000



## EDUCATIONAL FEES COMPARISONS DOCTORAL DEGREE

No.	Study Program	Regular Class		Leads Sholarship
		Tuition Fee	Development Fee	Tuitio Fee
1	Economics	26.000.000	48.750.000	15.000.000
2	Accounting Science	26.000.000	48.750.000	15..000.000
3	Management	26.000.000	48.750.000	15..000.000
4	Law	26.000.000	48.750.000	15..000.000
5	Medical Science	27.650.000	48.750.000	17.500.000
6	Civil Engineering	27.650.000	48.750.000	15..000.000
7	Architecture	27.650.000	48.750.000	15..000.000
8	Mechanical Engineering	27.650.000	48.750.000	15..000.000
9	Electrical Engineering	27.650.000	48.750.000	15..000.000
10	Earth & Environmental Science	27.650.000	48.750.000	15..000.000
11	Public Administration	26.000.000	48.750.000	12.000.000
12	Anthropology	26.000.000	48.750.000	12.000.000
13	Communication	26.000.000	48.750.000	12.000.000
14	Sociology	26.000.000	48.750.000	12.000.000
15	Political Science	26.000.000	48.750.000	12.000.000
16	Linguistics	26.000.000	48.750.000	12.000.000
17	English Language	26.000.000	48.750.000	12.000.000
18	Indonesian Literature	26.000.000	48.750.000	12.000.000
19	Chemistry	27.650.000	48.750.000	12.000.000
20	Mathematics	27.650.000	48.750.000	12.000.000
21	Physics	27.650.000	48.750.000	12.000.000
22	Animal Science	27.650.000	48.750.000	12.000.000
23	Dental Science	27.650.000	48.750.000	20.000.000
24	Public Health	27.650.000	48.750.000	17.000.000
25	Fisheries Science	27.650.000	48.750.000	12.000.000
26	Forestry Science	27.650.000	48.750.000	12.000.000
27	Pharmacy	27.650.000	48.750.000	16.500.000
28	Agricultural Science	27.650.000	48.750.000	12.000.000
29	Development Studies	25.856.000	48.750.000	12.000.000
30	Environmental Science	27.650.000	48.750.000	12.000.000

**should you have any  
queries, please do not  
hesitate to contact us:**



**Directorate of education Academic  
and Student Affairs Hasanuddin  
University Rectorate Building, Lv.7**



**[www.unhas.ac.id](http://www.unhas.ac.id)  
<https://regpmb.unhas.ac.id>  
<https://dikmawa.unhas.ac.id>**



**[regpmb@unhas.ac.id](mailto:regpmb@unhas.ac.id)**



**+62821 9416 5656  
+62853 4399 1587**



**@hasanuddin\_univ  
@akademikunhas**



**Universitas Hasanuddin**



**Universitas Hasanuddin**

